


**CLEANER, CHEAPER  
ELECTRICITY  
IS COMING IN  
FEBRUARY 2019!**



**SAN JOSE**   
**CLEAN ENERGY**  
A Program of the City of San José

# WHO ARE WE? WHY ARE WE HERE?

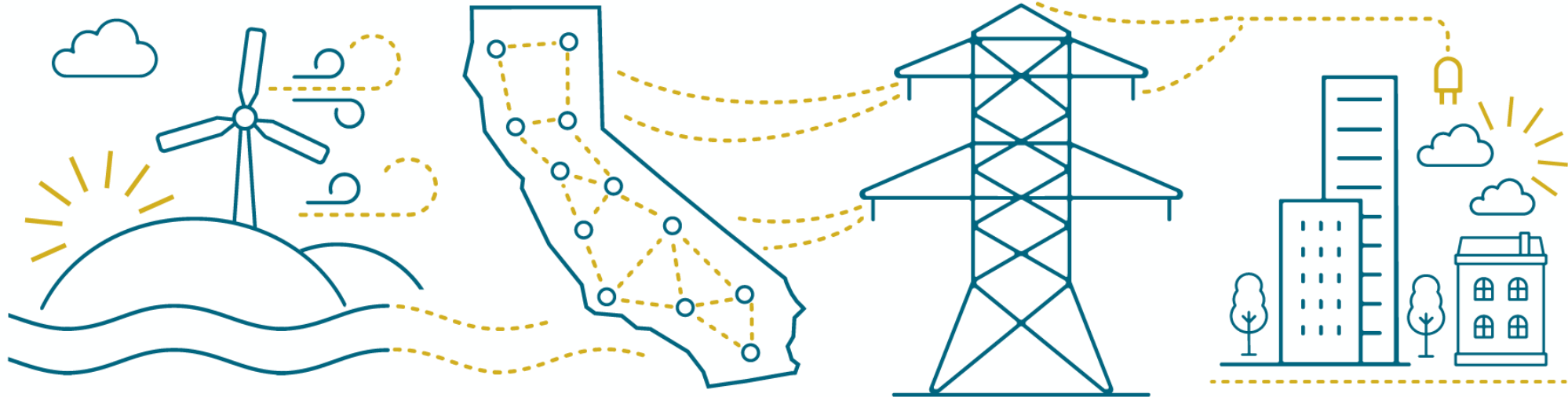
---



- A Community Choice Energy program
- Operated by the City's new Community Energy Department
- Committed to creating a more sustainable future

# HOW COMMUNITY CHOICE WORKS

---



## **SOURCE** **SJCE**

Sourcing and building cleaner energy

## **GRID** **CALIFORNIA**

Flowing clean energy into our state's power supply

## **DELIVERY** **PG&E**

Delivering energy, maintaining lines, serving customers

## **CUSTOMER** **YOU**

Using cleaner energy, preserving the environment

# COMMUNITY CHOICE IS EVERYWHERE

- 19 Community Choice Energy (CCE) programs statewide
- 8 in the Bay Area
- SJ is the largest single jurisdiction CCE in CA



\*Not all towns/cities within a county are served by the local Community Choice Energy agency. Please visit individual agency websites for more detailed service area information.

# HOW WE GOT HERE

---

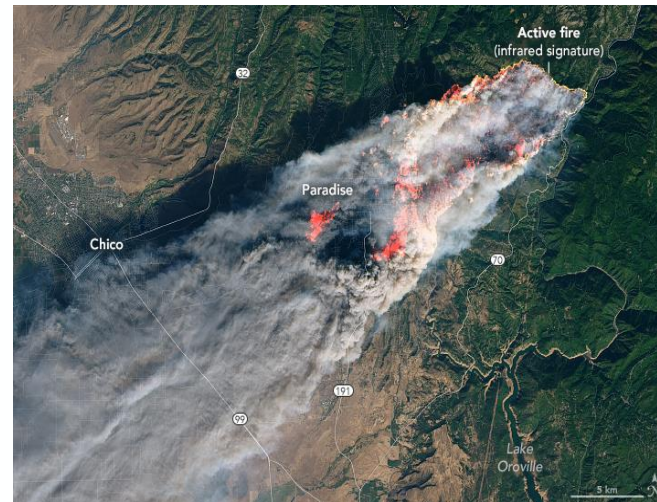
- Timeline
  - 2010: Residents asked City for a CCE
  - 2016: After years of study, City discusses forming a CCE with the community
  - May 2017: Established by the City Council
  - September 2018: Service launched to city accounts
  - February 2019: Service for residents and businesses begins



# WHY IS THIS IMPORTANT?

---

- Climate change
- We're already feeling impacts
  - Heat waves
  - Drought
  - Wildfires
  - Rising sea levels



# CLEAN ENERGY IS A SOLUTION

---

- Burning fossil fuels drives climate change and pollutes our air – renewable & carbon-free energy sources don't!

**Fossil fuels = coal, oil, natural gas**

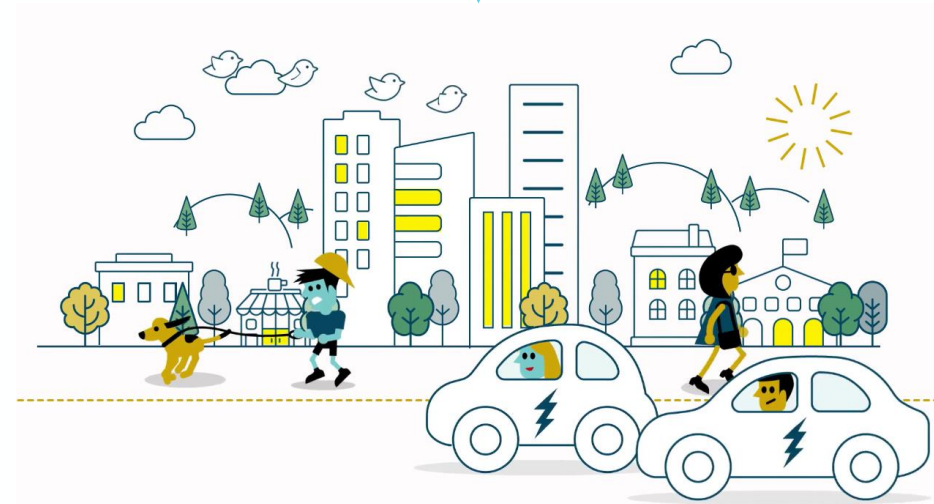
**Carbon-free energy = large hydroelectric, nuclear**

**Renewable energy (also carbon-free) = solar, wind, geothermal**



# HEALTH IMPACTS OF CLEAN ENERGY

- Burning fossil fuels costs US **\$120B/year** in health costs (National Academy of Sciences)
- With clean energy:
  - Fewer premature deaths
  - Less smog
  - Less asthma



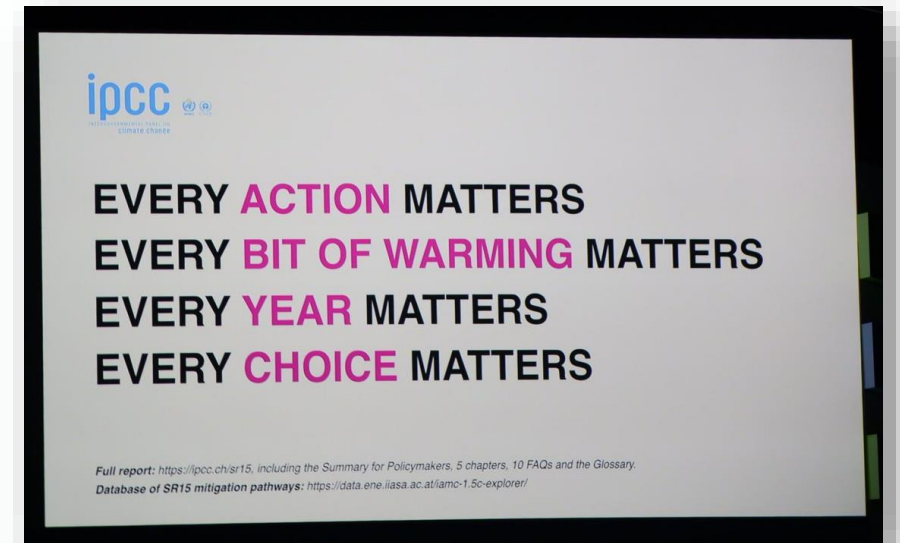


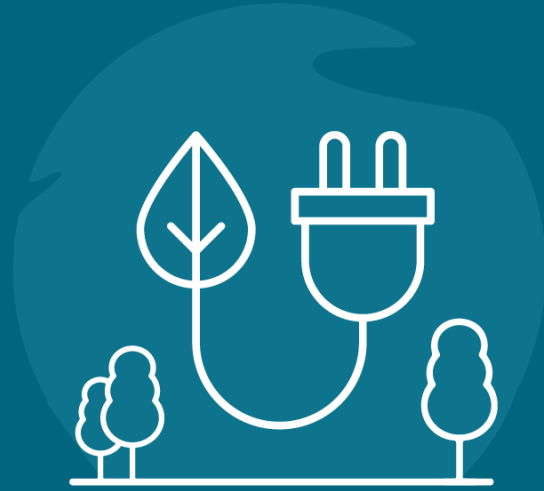
# MORE BENEFITS

---

In addition to health benefits:

- 1% bill savings = \$2M/year savings community-wide
- One of the most effective things you can do to reduce carbon emissions
- Local control
  - Revenue stays in SJ
  - You have a voice



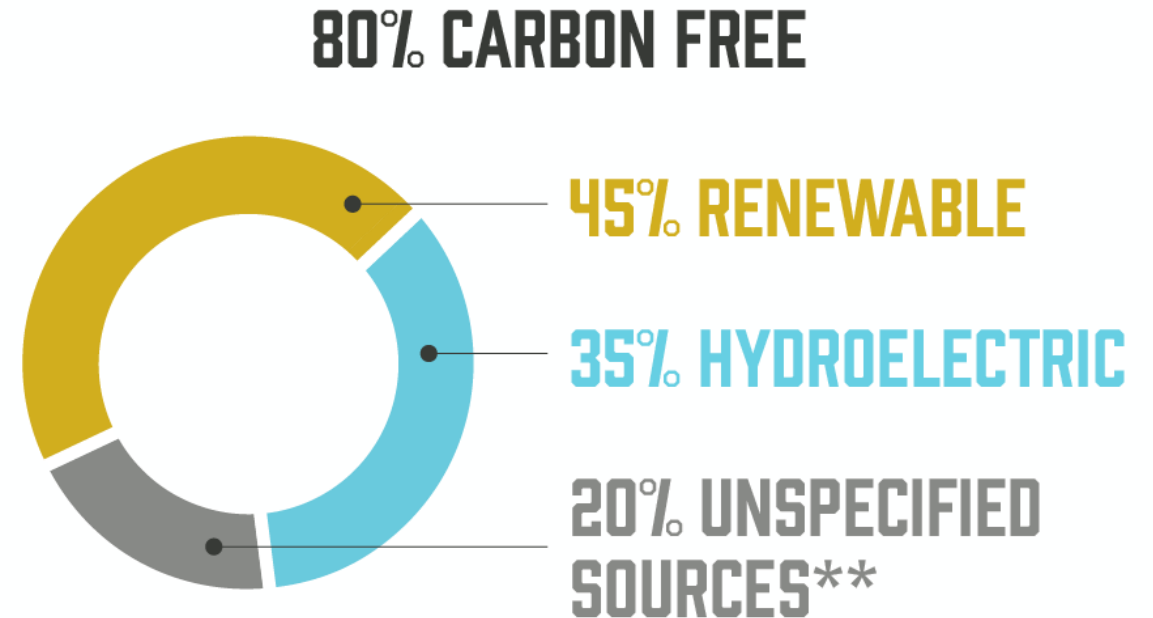


# YOUR ENERGY CHOICES

# GREENSOURCE

---

- Automatic enrollment
- Cleaner and cheaper
  - Competitive with PG&E rates
- Renewable sources:
  - Geothermal
  - Solar
  - Wind
- Carbon-free sources:
  - Hydroelectric

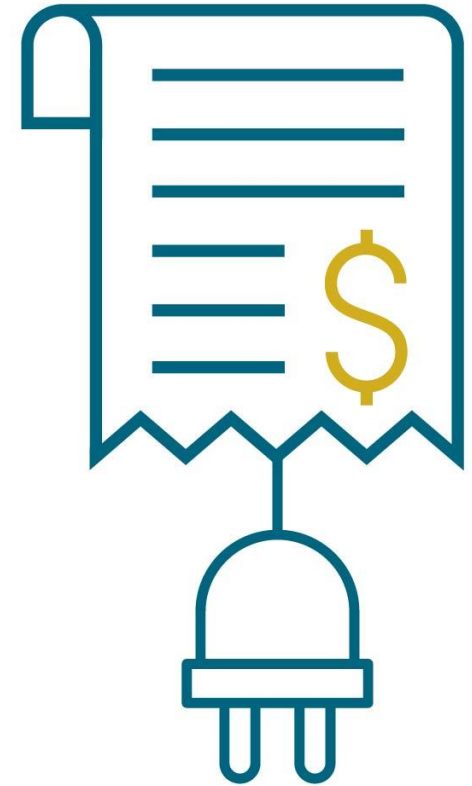


\*\*Unspecified sources aren't traceable to a specific generation facility, such as electricity traded through open-market transactions. Typically "brown sources" contain natural gas; they may include renewables and hydroelectric.

# WHY ARE WE CHEAPER?

---

- Renewable energy is cheap! And getting cheaper
- Not-for-profit
  - No shareholders or high executive compensation
- More efficient
  - Leaner staff
  - Spending a smaller percentage of revenue on operating expenses

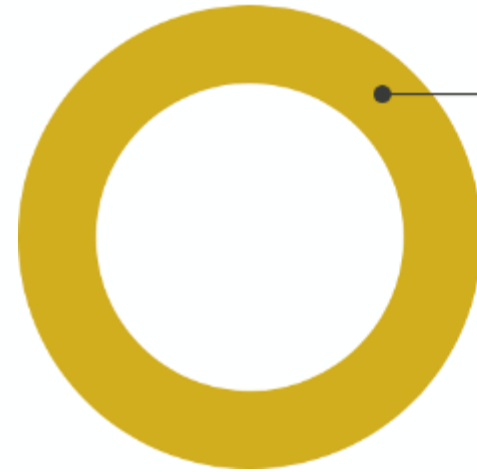


# TOTALGREEN

---

- You can sign up for TotalGreen now
  - Will begin in February 2019
- Choosing TotalGreen
  - Helps SJCE expand clean energy generation in California
  - Increases competition even more, keeping rates low
  - \$5-10 more per month than GreenSource on average

**100% CARBON FREE**

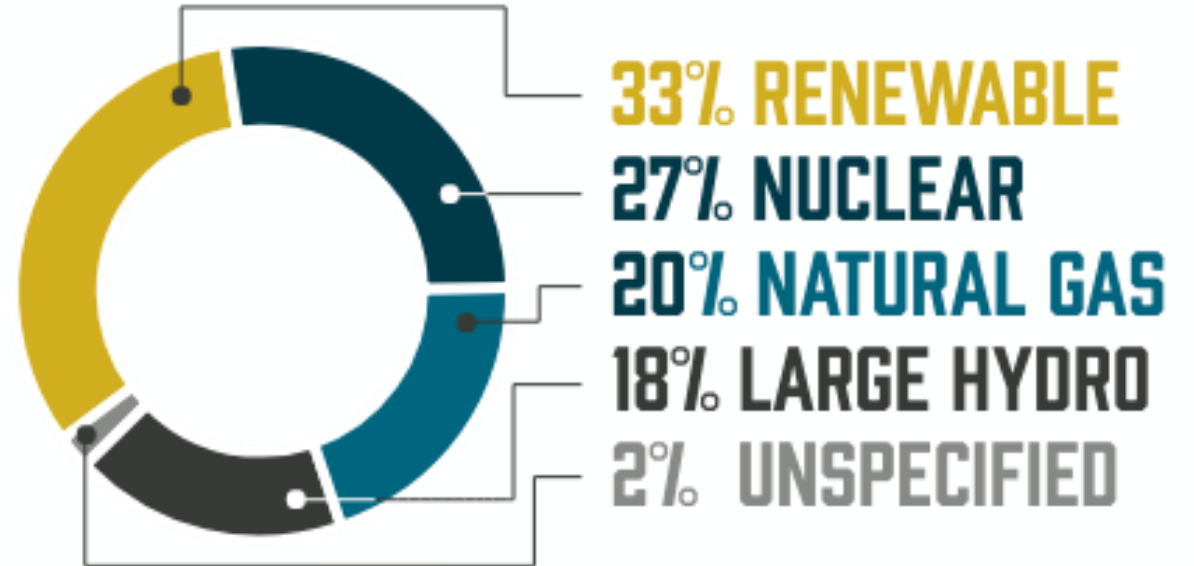


**100% RENEWABLE**

# OPT OUT – PG&E

---

- Not as much renewable energy and more expensive
- You can go back to PG&E at any time



*\*From PG&E's 2016 Power Content Label.*

# CUSTOMERS WHO WILL NOT BE ENROLLED IN FEBRUARY 2019

---

- Residents with rooftop solar - Net Energy Metering (NEM)
- Small businesses
  
- Expected enrollment in 2020
- Enroll early by selecting TotalGreen



# DISCOUNT PROGRAMS

---

- Continue to receive your discount
- No action needed
- Will be automatically enrolled with rates lower than PG&E
- Programs
  - California Alternate Rates for Energy (CARE)
  - Family Electric Rate Assistance (FERA)
  - Medical Baseline Allowance





# WHAT WILL MY BILL LOOK LIKE?



## ENERGY STATEMENT

[www.pge.com/MyEnergy](http://www.pge.com/MyEnergy)

Account No: 1023456789-0  
Statement Date: 04/01/2019  
Due Date: 04/19/2019

### Service For:

ELLIE WATTS  
1234 MAIN STREET  
SAN JOSE, CA 95110

### Your Account Summary

Credit Balance on Previous Statement	\$135.67
Payment(s) Received Since Last Statement	-135.67
Previous Unpaid Balance	<u>0.00</u>

### Questions about your bill?

24 hours per day, 7 days per week  
Phone: 1-866-743-0335  
[www.pge.com/MyEnergy](http://www.pge.com/MyEnergy)

Current PG&E Electric Delivery Charges	\$94.48
San José Clean Energy Electric Generation Charges	\$44.98
<b>Total Amount Due by 04/19/2019</b>	<b>\$139.46</b>

# CUSTOMER SERVICE

---

- PG&E:
  - Sends the bill
  - Gas services & charges
  - Power outages
- San José Clean Energy:
  - Generation billing questions
  - Customer service related to electricity generation
    - Upgrade to TotalGreen
    - Opt out back to PG&E
  - 833-432-2454 or [info@sanjosecleanenergy.org](mailto:info@sanjosecleanenergy.org)



# CUSTOMER OUTREACH

---



- Enrollment notices (4):
  - Late December
  - Mid-January
  - Late February
  - Late March
- Trilingual outreach via:
  - Community-based organizations
  - Presentations
  - Events
  - Marketing and advertising

# PROGRAMS INTRODUCTION

---

- As a not-for-profit, San Jose Clean Energy can invest operational surpluses into the community through programs
- SJCE can also promote or integrate programs managed by other city or state agencies or PG&E
- Examples from other CCE's in CA:



## LOCAL INVESTMENTS



Community Pilots: Awarded grants for innovative local projects to advance electrification



Drive EV: Offered rebate to lease or buy an electric vehicle

# QUESTIONS?

---

Thank you for your time!  
Community Energy Department  
(408) 535-4999  
info@sanjosecleanenergy.org  
Customer Service  
(833) 432-2454

**SanJoseCleanEnergy.org**



**@sjcleanenergy**

